

## Istation Installation for Mac

Use the following instructions to install Istation on computers that meet the Macintosh system requirements (view the system requirements, visit <http://www.istation.com/support/technicalinfo>).

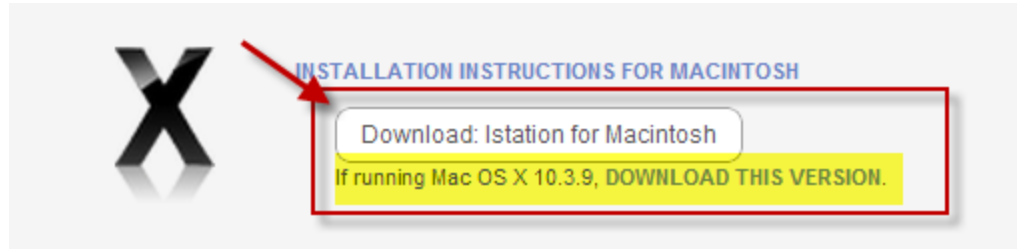
If there is a protection program on the computers, follow the protection program's instructions for disabling the program before installing Istation. To ensure program reliability, Istation writes encrypted data to the hard drive that must survive reboots. Programs that inhibit this operation, such as Deep Freeze or Clean Slate, must be configured to permit Istation to save data to its folder.

**NOTE:** To install Istation, you should first log into the Macintosh as a user with administrative privileges. Attempting to install as a user who does not have administrative privileges will prevent you from putting Istation into the Applications folder in step 5, and other users will not be able to run Istation.

1. Go to [www.istation.com](http://www.istation.com).
2. Click the **Support** drop-down menu.
3. Click **Download Istation**.



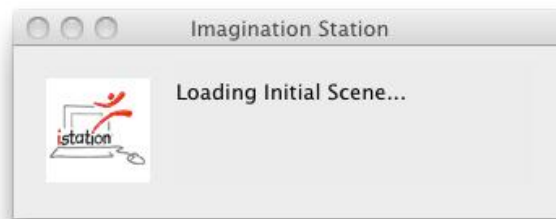
4. Click the Istation download link for the appropriate version of Mac OSX.
  - On Mac OSX 10.4: The Istation application will download to your Desktop. Proceed to step 5.



- On Mac OSX 10.3 and 10.5+: The Istation application will download to your Downloads folder. The Download list should have opened in a separate window, displaying **The Imagination Station** icon along with the other items that have been downloaded to your computer. Move **The Imagination Station** icon to your Desktop by completing the following two steps:
    - a. Click on the **Show in Finder** icon (magnifying glass) to open the Downloads folder if it is not already open.
    - b. Then click on the **The Imagination Station** icon in the Downloads folder and drag the icon to the Desktop.
5. If you logged in as a user with administrative privileges, you may move **The Imagination Station** icon into the Applications directory if you wish to allow other users of the computer to access it. To do so, perform the following two steps:
    - a. Open a Finder window and navigate to the Applications directory, located within Macintosh HD.
    - b. You may now click and drag the **The Imagination Station** icon from the Desktop to the Applications directory.



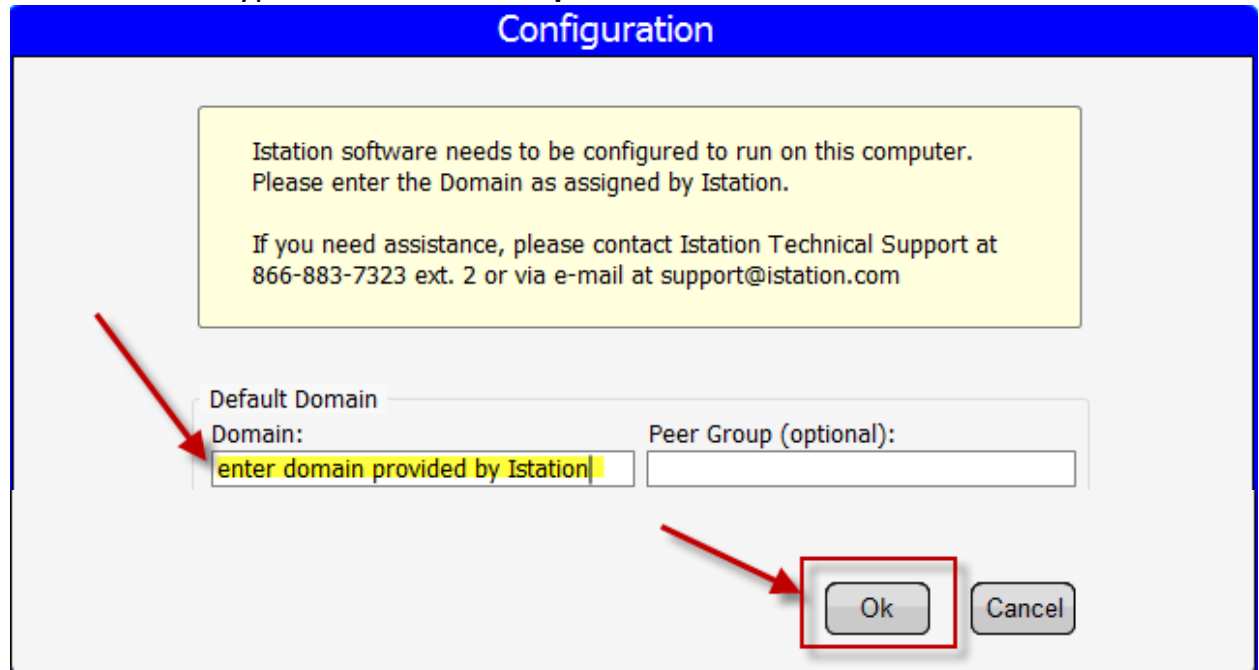
**NOTE:** If you double-click the icon before dragging to the desktop, you will receive the following message:



6. To run the Istation Reading Program, double-click **The Imagination Station** icon.

7. Type your school domain in the **Default Domain** box if it is not automatically supplied.

NOTE: Do not type in the **Peer Group** area.



8. Click **OK**.
9. Click **OK** on the message box that instructs to restart The Imagination Station.
10. Double-click **The Imagination Station** icon again.
11. If installing on multiple computers, leave the application running while you install other computers on the network by repeating the steps above. This will allow installations on other computers to skip step 7 and automatically configure the domain information.

Students, teachers, and administrators can now log in using this icon to access the student application. Remember, teachers and administrators will want to log in to the Istation website ([www.istation.com](http://www.istation.com)) to manage any classes or data.

If you need help identifying the domain, contact Istation Support Services at 866-883-7323, ext. 2 from 7:30 a.m. to 6:30 p.m. (CT) Monday through Friday or email [support@istation.com](mailto:support@istation.com).

Domains: Enter the name as it is shown below for your corresponding campus.

bentsen.sharyland.tx  
blgrayjs.sharyland.tx  
garza.sharyland.tx  
hinojosa.sharyland.tx  
jensen.sharyland.tx  
martinez.sharyland.tx  
shary.sharyland.tx  
sharylandnorthjs.sharyland.tx